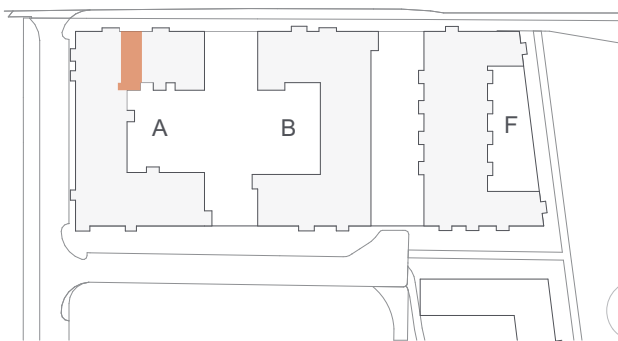
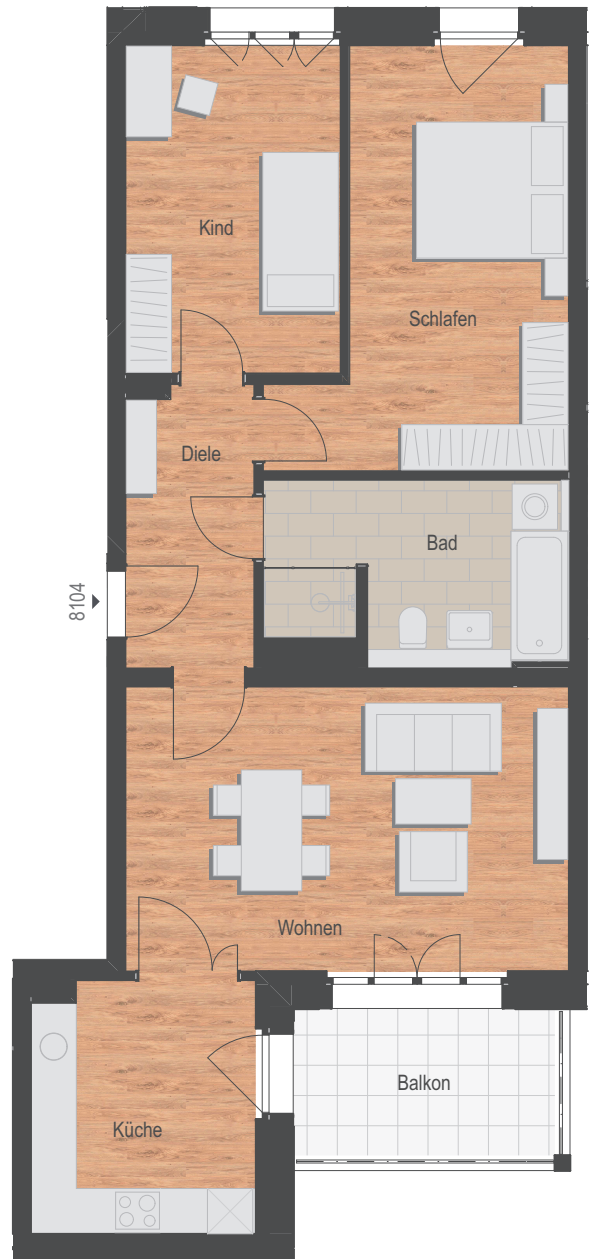


1. Obergeschss, 3-Zimmer-Wohnung

Bad	9,10 m <sup>2</sup>
Diele	6,14 m <sup>2</sup>
Kind	12,08 m <sup>2</sup>
Küche	9,60 m <sup>2</sup>
Schlafen	17,29 m <sup>2</sup>
Wohnen	21,65 m <sup>2</sup>

Wohnfläche netto	75,86 m <sup>2</sup>
Balkon (6,72 m <sup>2</sup> )	anrechenbar 3,36 m <sup>2</sup>

<b>Wohnfläche gesamt</b>	<b>79,22 m<sup>2</sup></b>
--------------------------	----------------------------



1:100 | 1 | 5 |